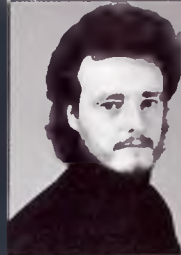


may



1 Tuesday 12.40pm

### The Receiving End

STEWART HENDERSON talks to a prominent public figure about their life and work. Entertaining, informative and in depth. His guest for this interview was yet to be confirmed when we went to press. Tickets £2, concessions £1.

2 Wednesday 12.40pm

### Making Contact

GERARD HUGHES is a Jesuit priest, and the author of the cult book *God of Surprises*. He specialises in talking to "bewildered, confused and disillusioned Christians". Tickets £1, concessions FREE.

8 Tuesday to 27 Sunday

### Shadow of Heaven

A remarkable collection of photographs of the Scottish landscape, taken by PATRICIA MACDONALD from a low-flying aircraft. Some are almost mystical, some almost abstract. Some are disturbing.

"An exhibition that pleases the eye and challenges the mind" *The List*.

Admission FREE.

Monday - Friday 10.00am - 2.00pm,  
Saturday 10.00am - midday.

9 Wednesday 12.40pm

### Making Contact

Admission and coffee free.



10 Thursday 8.00pm

### TOMOTADA SOH violin DENNIS LEE piano

The great Japanese virtuoso plays Schubert's Fantasie and sonatas by Mozart and Beethoven.

"Formidable talent... seductive, passionate and authoritative... the magnificent Mr Soh" *The Daily Telegraph*.

Tickets £4.50 (£4 in advance). Concessions £1 off. Sponsored by Citizen Europe Limited.

15 Tuesday 12.40pm

### TRACES OF GOD : FRANCIS OF ASSISI

BROTHER BERNARD reflects on the wealthy man who gave up everything to be close to Nature and close to God. Tickets £1, concessions FREE.



16 Wednesday 12.40pm

LAURENCE SPICER talks to London's most popular phone-in counsellor

### PHILLIP HODSON

Tickets £1.50, concessions 50p.



17 Thursday 12.10pm-1.50pm

### Jazz Up The Nave

with DICK MORRISSEY  
and JIM MULLEN

Enough said. With Naval Base, aka BRIAN LEMON, BOBBY ORR and JOHN REES-JONES. Tickets £2, concessions £1.



23 Wednesday 12.40pm

### Making Contact

Admission and coffee free.



27 Sunday 8.00pm

For Hillingdon Wildlife Week Pegasus presents PATRICIA BRAKE and CHRISTOPHER TIMOTHY in

### COUNTRY MATTERS

An evening of words and music in praise of the English countryside, and its creatures great and small...

With DANIEL PAILTHORPE flute.

Tickets £4 in advance only. Concessions £1 off. Sponsored by Grand Metropolitan Retailing Limited.



30 Wednesday 12.40pm

### Overcoming the Darkness

DOMINIC WALKER, Church of England spokesman on exorcism, on demons, ghosts and the reality of supernatural evil. Tickets £1, concessions FREE.

## THE PROGRAMME AT A GLANCE

- 3 APRIL David Montgomery on The Receiving End
- 4 APRIL Close Encounters: Brian Shand
- 5 APRIL Cello recital by Claus Kanngiesser
- 10 APRIL John, Paul, George and Ringo who?
- 11 APRIL Faith without Frills
- 11 APRIL An Impossible God
- 17 - 28 APRIL Thai Life
- 17 APRIL Raiders of the Square Mile
- 18 APRIL Traces of God: Philip Larkin
- 19 APRIL Jazz Up The Nave with Janusz Carmello
- 21 APRIL Ruby Blue plus Local Support
- 24 APRIL Making Contact: Sheila Cassidy
- 25 APRIL Faith without Frills
- 26 APRIL The Verge of Success: Stormy Weather
- 1 MAY The Receiving End: *to be announced*
- 2 MAY Making Contact: Gerard Hughes
- 8 - 27 MAY Shadow of Heaven
- 9 MAY Making Contact
- 10 MAY Violin recital by Tomotada Soh
- 15 MAY Traces of God: Francis of Assisi
- 16 MAY Laurence Spicer talks to Phillip Hodson
- 17 MAY Jazz Up The Nave with Dick Morrissey and Jim Mullen
- 23 MAY Making Contact
- 27 MAY Country Matters
- 30 MAY Overcoming the Darkness

All programme details are accurate at time of going to press. The management reserves the right to change the programme without notice.

The Nave at St Margaret's, Windsor Street,  
Uxbridge, Middlesex UB8 1AB  
Tel: (Box Office) Uxbridge 31333  
(Office) Uxbridge 812193

St Margaret's is still a church - a centre for public worship and private prayer, as it has been since the 13th century.

For details of services, please see the church noticeboard or ring Uxbridge 58766.

A short service of Holy Communion will be held in the Chapel every Friday at 12.40pm.

If you would like to talk to a member of the clergy, someone will be available after Holy Communion on Friday, from 1.10pm - 2.00pm.

# THE NAVE



WAYNE and MELANIE MARSHALL on the Showboat • PRUNELLA SCALES and BENJAMIN WHITROW on hassocks in cassocks • NIGEL BARLEY on innocent anthropology • and much, much more



# THE NAVE

Putting the beat in the heart of Uxbridge

All lunchtime events except Jazz Up The Nave are scheduled to end by 1.20pm, when coffee and freshly made sandwiches will be on sale.  
Doors open for evening events at 7.30pm.

april



**3** Tuesday 12.40pm  
**The Receiving End**  
STEWART HENDERSON  
talks to the Editor of *Today*  
and former Editor of the *News of the World*  
**DAVID MONTGOMERY**  
Tickets £2, concessions £1.

**4** Wednesday 12.40pm  
**Close Encounters 5**  
BRIAN SHAND, Chaplain to Uxbridge Town Centre,  
talks about his experience of God, "the most amazing  
discovery of my life". Tickets £1, concessions FREE.



**5** Thursday 12.40pm  
**CLAUS KANNGIESSER** cello  
**DENNIS LEE** piano  
The cellist of the famous Stuttgart Piano Trio  
plays music by **Beethoven, Chopin** and  
**Tchaikovsky**  
Tickets £2, concessions £1.  
Sponsored by Hillingdon Arts Association.



**10** Tuesday 12.40pm  
**John, Paul, George and Ringo who?**  
Leading rock journalist STEVE TURNER (*The Times, The Sunday Times, Q*)  
assesses The Beatles, who split up 20 years ago today. Without the hype  
and the hysteria, how good do they look from here?  
Tickets £1.50, concessions 50p.

**11** Wednesday 12.40pm  
**Faith without Frills**  
Continuing our basic course on the central teachings of Christianity.  
Admission and coffee free.



**11** Wednesday 8.00pm  
FRANK TOPPING in  
**AN IMPOSSIBLE GOD**  
The popular actor and entertainer brings to life  
the men and women who witnessed the events of  
the first Good Friday and Easter.  
Tickets £3.50 (£3 in advance). Concessions £1 off.

**17** Tuesday to **28** Saturday  
**Thai Life**  
Delightful photographs in glorious colour of faraway  
faces and places, taken by ANTHONY FLOREY.  
Admission FREE.  
Monday - Friday 10.00am - 2.00pm,  
Saturday 10.00am - midday.



**17** Tuesday 12.40pm  
**Raiders of the Square Mile**  
JOHN MALONEY, Principal Excavations Officer of  
the City of London, describes the fascinating finds  
of recent years, from the Roman amphitheatre to  
the medieval docks.  
Tickets £1.50, concessions 50p.



**18** Wednesday 12.40pm  
**TRACES OF GOD : PHILIP LARKIN**  
TIM RAPHAEL on the poet who struggled with atheism all his life.  
Tickets £1, concessions FREE.

**19** Thursday 12.10pm-1.50pm  
**Jazz Up The Nave**  
with **JANUSZ CARMELLO**  
BRIAN LEMON, BOBBY ORR and JOHN REES-JONES  
are joined on pocket trumpet by Radio 2's Most  
Outstanding Soloist of 1988, "the remarkable Janusz  
Carmello, broad-toned, hot and fiery, bouncing with  
bravado" *Jazz Circle News*. Tickets £2, concessions £1.



**21** Saturday Doors open 7.30pm  
**RUBY BLUE**  
A rich mix of blues, folk and rock with a  
strong Celtic flavour, offering haunting  
vocals and thunderous hooks. "One of the  
more glorious gigs of the week" *Time Out*.  
Tickets £4.50 (£4 in advance).  
Concessions £1 off.



**PLUS Local Support**  
LEIGH HEGGARTY of The Price joins forces with fellow guitarist PAUL COPE  
and blues singer JOHN SAXON.

**MAKING CONTACT**  
A new series looks at different ways to approach God. Two talks on prayer  
by popular Christian writers are followed by four practical sessions led by  
BRIGID PAILTHORPE, a lay chaplain at Northwick Park Hospital.

**24** Tuesday 12.40pm  
**Making Contact**  
SHEILA CASSIDY explains the idea of prayer.  
In 1975, Dr Cassidy was arrested and tortured  
in Chile for treating a wounded revolutionary. For  
the past nine years she has worked with people  
dying of cancer. Tickets £1, concessions FREE.



**25** Wednesday 12.40pm  
**Faith without Frills** Admission and coffee free.

**26** Thursday 12.40pm  
**THE VERGE OF SUCCESS: Stormy Weather**  
RICHARD PAINTER & friends read his latest short play about an old lady and  
a large black bird. Alfred Hitchcock meets Hilda Ogden. Admission FREE.



**TICKETS**  
Tickets for all events at The Nave are available from MUSIQUE,  
the Compact Music shop directly opposite Uxbridge Tube Station.  
MUSIQUE is open Monday - Saturday 9.00am - 6.00pm.

Alternatively, you can buy tickets at The Nave, Monday - Friday  
10.00am - 2.00pm and for half an hour before evening perfor-  
mances.

**You can reserve tickets for any event on Uxbridge 31333.** Tickets  
will be held at The Nave for three days, pending receipt of payment  
by post or in person.

Concessions are generally available to children under 16, students,  
UB40s and senior citizens. Proof of status may be required.

Discounts for parties of 10 or more may be negotiated - please ring  
Uxbridge 812193.

Tickets may not be exchanged nor money refunded except in the  
event of cancellation.

**DIRECTIONS**  
The Nave is less than a minute's walk from Uxbridge Tube Station  
(Metropolitan & Piccadilly) and Uxbridge Bus Station (Routes U1,  
U2, U3, U4, U5, 58, 128, 207, 222, 223, 305, 325, 347, 348, 443  
and 458).

Ample parking is available in the Cedars and Grainges car parks  
behind the Pavilions, which are both accessible from Oxford Road.  
Limited free parking is available in Windsor Street after 6.30pm.

**ACCESS FOR THE DISABLED**  
The Nave offers easy access to wheelchairs and has a toilet for the  
disabled. Please note, however, that some events take place  
upstairs.

