

# THE NAVE

*Putting the beat in the heart of Uxbridge*

All lunchtime events except Jazz Up The Nave are scheduled to end by 1.20pm, when coffee and freshly made sandwiches will be on sale.  
Evening events are boxed in purple. Doors open at 7.30pm.

## Cards for Good Causes

From Saturday 2 NOVEMBER to Saturday 21 DECEMBER, Christmas cards will be on sale at The Nave in aid of a wide range of charities, from the Arthritis & Rheumatism Council to the World Wide Fund for Nature.  
Monday – Friday 10.00am – 2.00pm, Saturday 10.00am – midday.

## NOVEMBER

### 2 Saturday 8.00pm LIES DAMNED LIES

Haunting, original and intelligent music, beautifully crafted by this fine Scottish band. "Damned good stuff" *Strait*.

#### PLUS Sublime

Simon & Garfunkel meet The Smiths.  
Tickets £4 (£4.50 on the door). Concessions £1 off.



5 Guy Fawke's Day 12.40pm

### The Receiving End

STEWART HENDERSON talks to the Chair of CND

## MARJORIE THOMPSON

Tickets £2, concessions £1.



### WHAT IS THE WORLD COMING TO?

History must someday have an ending, whether happy or not. This short series of talks looks at the matter from three different angles.



6 Wednesday 12.40pm

### What is the World Coming to? 1

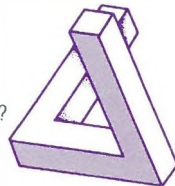
Jesus talked often about the end of the world. Canon JOHN FENTON, of Christ Church Oxford, examines what he said and explains what he meant by it.  
Tickets £1.50, concessions 50p.



12 Tuesday 12.40pm

### The Ultimate Illusion

11,000 people were delighted but mystified by our recent exhibition of holograms. But what is holography? How does it work? And what is it used for? Professor NICK PHILLIPS sheds some light.  
Tickets £2, concessions £1.



13 Wednesday 12.40pm

### TRACES OF GOD : DINIS SENGULANE

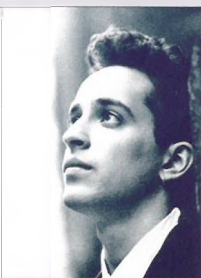
Bishop DONALD ARDEN on the pastor, evangelist and statesman who at the age of 31 was made a bishop in the tortured country of Mozambique.  
Tickets £1.50, concessions 50p.

14 Thursday 12.10pm – 1.50pm

### Jazz Up The Nave

with JASON REBELLO

A rare solo performance from the prodigious young pianist named the Rising Star of 1991 in the recent Perrier British Jazz Awards.  
"Flawless ... never ceases to astonish" *The Guardian*.  
Tickets £2.50, concessions £1.50.



14 Thursday 8.00pm

### FIONA CAMERON *soprano*

JULIUS DRAKE *piano*

Two of Britain's leading young musicians perform songs by Poulenc, Quilter, Schubert and Strauss.  
"Fiona Cameron has a mettlesome, sparky soprano with a golden edge" *The Financial Times*.  
"A marvellously sensitive pianist" *The Times*.  
Tickets £4.50 (£5 on the door). Concessions £1 off.



19 Tuesday 12.40pm

PAUL GILLINGHAM talks to the newly-knighted

## PEREGRINE WORSTHORNE

former Editor of *The Sunday Telegraph*.

Tickets £2, concessions £1.



20 Wednesday 12.40pm

### What is the World Coming to? 2

JAMES BELL considers the idea that today (and every day) is the day of judgement. Tickets £1.50, concessions 50p.

21 Thursday 8.00pm

Adzido 12 presents

## TALKING SPIRITS

14 master dancers and drummers from ADZIDO PAN-AFRICAN DANCE ENSEMBLE offer a crash course in the splendours of African music and movement.  
Intoxicating, exhilarating and spectacular. "Adzido receive ecstatic applause" *New Musical Express*.  
Tickets £4.50 (£5 on the door). Concessions £1 off. Sponsored by The Chef & Brewer Group Limited.



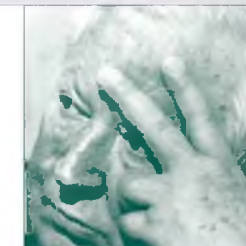
26 Tuesday 12.40pm

### The Receiving End

STEWART HENDERSON talks to the former Prime Minister, the Rt Hon

## EDWARD HEATH

Tickets £2, concessions £1.



Please turn over for 3 to 20 DECEMBER

## TICKETS

Tickets are available from RAINBOW RECORDS, directly opposite Uxbridge Tube, Monday – Saturday 9.00am – 6.00pm: or from The Nave, Monday – Friday 10.00am – 2.00pm and from 7.30pm before evening performances.

**You can reserve tickets for any event on 0895 231333.** Tickets will be held at The Nave for three working days, pending receipt of payment by post or in person. (Cheques should be made payable to 'The Nave at St Margaret's'.)

Concessions are generally available to children under 16, students, UB40s and senior citizens. Proof of status may be required.

**We regret that children under 5 cannot be admitted to events at The Nave.**

Discounts for parties of 10 or more may be negotiated – please ring 0895 812193.

Tickets may not be exchanged nor money refunded except in the event of cancellation.

## DIRECTIONS

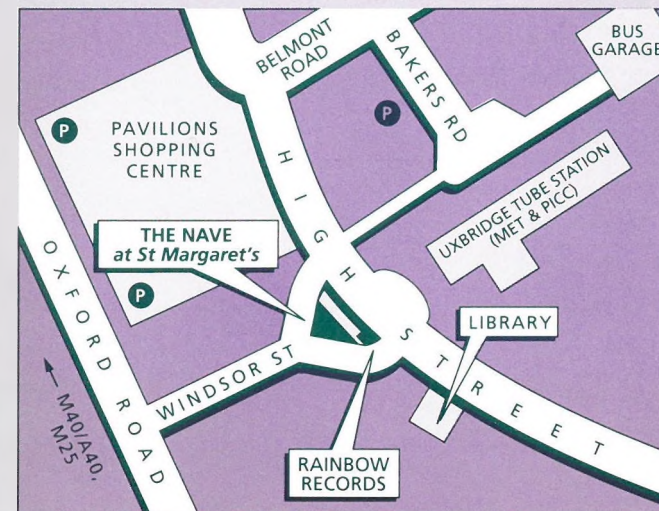
The Nave is a minute's walk from Uxbridge Tube (Metropolitan & Piccadilly) and Uxbridge Bus Station (U1, U2, U3, U4, U5, 207, 222, 223, 305, 348 and 458).

Ample parking is available in the Cedars and Grainges car parks behind the Pavilions Shopping Centre, off Oxford Road. Limited free parking is available in Windsor Street after 6.30pm.

## ACCESS FOR DISABLED PEOPLE

The Nave offers easy access to wheelchairs, and has a toilet for disabled people – but please note that some events may take place upstairs.

The Nave at St Margaret's, Windsor Street, Uxbridge, Middlesex UB8 1AB  
Phone (Ticket reservations): 0895 231333  
(Enquiries): 0895 812193





## THE PROGRAMME AT A GLANCE

Evening events are printed in bold type.

<b>2 NOVEMBER</b>	<b>Lies Damned Lies plus Sublime</b>
5 NOVEMBER	Marjorie Thompson on The Receiving End
6 NOVEMBER	What is the World Coming to? 1
12 NOVEMBER	The Ultimate Illusion
13 NOVEMBER	Traces of God: Dinis Sengulane
14 NOVEMBER	Jazz Up The Nave with Jason Rebello
<b>14 NOVEMBER</b>	<b>Song recital by Fiona Cameron</b>
19 NOVEMBER	Paul Gillingham talks to Sir Peregrine Worsthorpe
20 NOVEMBER	What is the World Coming to? 2
<b>21 NOVEMBER</b>	<b>Talking Spirits</b>
26 NOVEMBER	Edward Heath on The Receiving End
3 DECEMBER	Everest the Hardest Way
3 – 20 DECEMBER	Picture Windows
4 DECEMBER	What is the World Coming to? 3
<b>5 DECEMBER</b>	<b>Harp recital by Sioned Williams</b>
11 DECEMBER	Traces of God: Laszlo Tokes
12 DECEMBER	Jazz Up The Nave with Barbara Thompson
17 DECEMBER	Paul Gillingham talks to Barry Cryer
18 DECEMBER	God with Us
<b>18 DECEMBER</b>	<b>Good Businessmen, Rejoice</b>
<b>19 DECEMBER</b>	<b>Prince...? What Prince?</b>

All programme details are accurate at time of going to press. The management reserves the right to change the programme without notice.

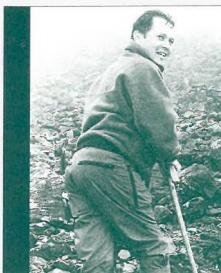
Cover art: Photograph of a newborn baby by John Sturrock/Network  
Design by Simon Jenkins Associates

**St Margaret's** is still a church – a centre for public worship and private prayer, as it has been since the 13th century. For details of services, please see the church noticeboard or ring 0895 270759.

A short service of Holy Communion is held in the Chapel every Friday at 12.40pm.

If you would like to talk to a member of the clergy, someone is always available after Holy Communion on Friday, from 1.10pm – 2.00pm.

## DECEMBER



### 3 Tuesday 12.40pm Everest the Hardest Way

JOHN HAWKRIDGE was born with cerebral palsy, and his legs were crippled by years of surgery. Even so, at the age of 40, he climbed 19,000 feet in the Himalayas to see the roof of the world for himself. An illustrated talk by the world's highest achiever. Tickets £2, concessions £1.

### 3 Tuesday to 20 Friday Picture Windows

An exhibition of the best photographs, drawings and paintings in the Borough's recent *Window on Wildlife* competition. Admission FREE. Monday – Friday 10.00am – 2.00pm, Saturday 10.00am – midday.



### 4 Wednesday 12.40pm What is the World Coming to? 3

DONALD REEVES, Rector of St James's Piccadilly, looks at the signs that the end of the world (at least as we know it) is near. Tickets £1.50, concessions 50p.



### 5 Thursday 8.00pm SIONED WILLIAMS harp

The astonishing beauty and range of the classical harp are explored by the principal of the BBC Symphony Orchestra. "A brilliant harpist ... a rare catch on the concert platform" *The Financial Times*. Tickets £4.50 (£5 on the door). Concessions £1 off.



### 11 Wednesday 12.40pm TRACES OF GOD : LASZLO TOKES

DAVID PORTER on the turbulent priest who triggered the beginning of revolution in Romania two years ago this Sunday. Tickets £1.50, concessions 50p.



12 Thursday 12.10pm – 1.50pm

### Jazz Up The Nave

with BARBARA THOMPSON

Naval Base are joined on soprano, alto and tenor saxophone by one of Britain's finest and most accomplished jazz/rock musicians and composers.

Naval Base comprises BRIAN LEMON, JOHN REES-JONES and BOBBY ORR.

Tickets £2.50, concessions £1.50.

17 Tuesday 12.40pm

PAUL GILLINGHAM talks to the supreme wit

### BARRY CRYER

Tickets £2, concessions £1.



18 Wednesday 12.40pm

### God with Us

A meditation for Christmas by DAVID RUNCORN, author of *Space for God*. Admission free.



18 Wednesday 6.00pm

### Good Businessmen, Rejoice

A short service of lessons and carols, in association with the Rotary Club of Uxbridge. All welcome. There will be a collection in aid of Age Concern Hillingdon.



19 Thursday 8.00pm

### Skin and Blisters present PRINCE...? WHAT PRINCE?

Half a dozen whip-cracking, knife-juggling, gravity-defying princesses celebrate their escape from the Brothers Grimm in this absurd comic fantasy.

The all-female company features leading artistes from the UK, America, Australia, Spain and Brazil.

"An exciting, punky form of circus theatre" *City Limits*.

Tickets £4.50 (£5 on the door). Concessions £1 off.

Sponsored by The Chef & Brewer Group Limited.



And a very merry Christmas to all our readers!

# THE NAVE

NOVEMBER & DECEMBER

