

THE NAVE

Putting the beat in the heart of Uxbridge

All lunchtime events except Jazz Up The Nave are scheduled to end by 1.20pm, when coffee and freshly made sandwiches will be on sale. Evening events are boxed in purple. Doors open at 7.30pm.



Cards for Good Causes

From Saturday 14 NOVEMBER to Wednesday 16 DECEMBER, Christmas cards will be on sale at The Nave in aid of a wide range of charities.

Monday – Friday 10.00am – 2.00pm, Saturday 10.00am – midday.

NOVEMBER



3 Tuesday 12.40pm

The Receiving End

STEWART HENDERSON talks to

JOHN SIMPSON CBE

Tickets £2, concessions £1.

4 Wednesday 12.40pm

The Light Before the Dawn

4 : STEVE MOTYER on the Word of the Lord.

Tickets £1.50, concessions 50p.

5 Guy Fawkes' Day 8.00pm

MUSICA DOLCE

A delightful evening of music for voice, recorder, cello and harpsichord by **Bach, Vivaldi, Handel, Scarlatti and Telemann.**

Tickets £4.50 (£5.50 on the door).

Concessions £2 off.

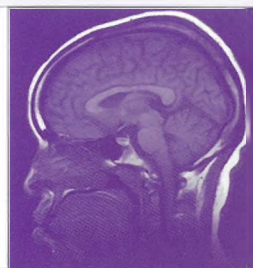


10 Tuesday 12.40pm

Your Health! 3

Professor DONALD LONGMORE, of the Royal Brompton Hospital, on the new scanning technology which allows doctors to see clearly into the depths of the human body.

Tickets £2, concessions £1. All proceeds go to Corda, the heart charity. Supported by Glaxo.



10 Tuesday to **27** Friday

Amusing Grace

The quaint ways of Christians, captured in cartoons by Our Man in the Back Pew, SIMON JENKINS. Admission FREE.

Monday – Friday 10.00am – 2.00pm, Saturday 10.00am – midday (closed 14 NOVEMBER).



11 Armistice Day 12.40pm

TRACES OF GOD : JULIAN OF NORWICH

JOHN MICHAEL MOUNTNEY on the mystic whose *Revelations of Divine Love* seem today as fresh and to the point as when they were written 600 years ago.

Tickets £1.50, concessions 50p.



12 Thursday 12.10pm – 1.50pm

Jazz Up The Nave

with **JOHNNY VAN DERRICK** and **ADELE ANDERSON**

The world's greatest living jazz violinist in a surprising liaison with one third of Fascinating Aida. In support for the last time, Naval Base – aka BRIAN LEMON, JOHN REES-JONES and BOBBY ORR.

Tickets £3, concessions £2.



12 Thursday 8.00pm

ADRIAN PLASS and BRIDGET PLASS in

THE UGLY TRUTH

Subversive humour and disturbing honesty from the man who takes the 'p' out of 'piety'.

Tickets £4.50 (£5.50 on the door).

Concessions £2 off.

17 Tuesday 12.40pm

Is There Hope for the Earth?

As the dust settles on Rio, can we look forward to a brighter future?

JONATHON PORRITT considers our prospects.

Tickets £2, concessions £1. Sponsored by The Pavilions Shopping Centre, Uxbridge.



A VISIBLE GOD

According to John's Gospel, "God ... became a human being, and lived among us". A short new series wonders what he was like.



18 Wednesday 12.40pm

A Visible God 1

MARTIN GOLDSMITH looks at Jesus through the eyes of his apostle Paul. Tickets £1.50, concessions 50p.



THE CURSE OF THE PHARAOHS

19 Thursday 8.00pm

Empty Space Theatre Company presents

A romantic thriller, charged with mystery, horror and suspense. Haunting music and gorgeous designs evoke the Valley of the Kings, where an English archeologist is digging his own grave. "Empty Space's stunning productions ... full of unforgettable images ... are technically and emotionally amazing" *The Independent*.

Tickets £5 (£6 on the door). Concessions £2 off. Sponsored by The Chef & Brewer Group Limited.

24 Tuesday 12.40pm

PAUL GILLINGHAM talks to

ZOË WANAMAKER

Tickets £2, concessions £1. Sponsored by Coca-Cola & Schweppes Beverages Limited.



25 Wednesday 12.40pm

A Visible God 2

DAVID RUNCORN looks at Jesus through the eyes of his close friend Peter. Tickets £1.50, concessions 50p.

Please turn over for 2 to 22 DECEMBER

TICKETS

Tickets are available from BARNARDS BOOKSHOP in Windsor Street, Monday – Saturday 9.00am – 5.30pm: or from The Nave, Monday – Friday 10.00am – 2.00pm and from 7.30pm before evening performances.

You can reserve tickets for any event on 0895 231333 Tickets will be held at The Nave for three working days, pending receipt of payment by post or in person. (Cheques should be made payable to 'The Nave at St Margaret's'.)

Concessions are generally available to children under 16, students, UB40s and senior citizens. Proof of status may be required.

We regret that children under 5 cannot be admitted to events at The Nave.

Discounts for parties of 10 or more may be negotiated – please ring 0895 812193.

Tickets may not be exchanged nor money refunded except in the event of cancellation.

DIRECTIONS

The Nave is a minute's walk from Uxbridge Tube (Metropolitan & Piccadilly) and Uxbridge Bus Station (U1, U2, U3, U4, U5, 207, 222, 223, 305, 348 and 458).

Ample parking is available in the Cedars and Grainges car parks behind the Pavilions Shopping Centre, off Oxford Road. Limited free parking is available in Windsor Street after 6.30pm.

ACCESS FOR DISABLED PEOPLE

The Nave offers easy access to wheelchairs, and has a toilet for disabled people – but please note that some events may take place upstairs.

The Nave at St Margaret's, Windsor Street, Uxbridge, Middlesex UB8 1AB
Phone (Ticket reservations): 0895 231333
(Enquiries): 0895 812193



THE PROGRAMME AT A GLANCE

Evening events are printed in bold type.

3 NOVEMBER	John Simpson on The Receiving End
4 NOVEMBER	The Light Before the Dawn 4
5 NOVEMBER	Musica Dolce
10 NOVEMBER	Your Health! 3
10 – 27 NOVEMBER	Amusing Grace
11 NOVEMBER	Traces of God: Julian of Norwich
12 NOVEMBER	Jazz Up The Nave with Johnny Van Derrick and Adèle Anderson
12 NOVEMBER	The Ugly Truth
17 NOVEMBER	Is There Hope for the Earth?
18 NOVEMBER	A Visible God: Paul
19 NOVEMBER	The Curse of the Pharaohs
24 NOVEMBER	Paul Gillingham talks to Zoe Wanamaker
25 NOVEMBER	A Visible God: Peter
2 DECEMBER	A Visible God: John
3 DECEMBER	The Brindisi String Quartet
8 DECEMBER	The Lord Chancellor on The Receiving End
9 DECEMBER	A Visible God: Mary
10 DECEMBER	Mike Peters and the Poets of Justice
12 DECEMBER	Behind the Mask
15 DECEMBER	Your Health! 4
16 DECEMBER	Traces of God: Christina Rossetti
17 DECEMBER	Jazz Up The Nave with Andy Sheppard
22 DECEMBER	Paul Gillingham talks to Kaffe Fassett

All programme details are accurate at time of going to press. The management reserves the right to change the programme without notice.

Cover art: Scan of a baby's head, from the MR Unit, Royal Brompton Hospital

Design by Simon Jenkins Associates



The Nave is presented by St Margaret's as a contribution to the cultural and spiritual life of the community.

St Margaret's is still a church – a centre for public worship and private prayer, as it has been since the 13th century. For details of services, please see the church noticeboard or ring 0895 254121.

A short service of Holy Communion is held in the Chapel every Friday at 12.40pm.

If you would like to talk to a member of the clergy, someone is always available on Friday, from 1.10pm – 2.00pm.

DECEMBER



2 Wednesday 12.40pm

A Visible God 3

Canon JOHN FENTON looks at Jesus through the eyes of the writer of John's Gospel. Tickets £1.50, concessions 50p.

3 Thursday 8.00pm

THE BRINDISI STRING QUARTET



Haydn Quartet Op 76 no 2
Beethoven Quartet Op 95
Ravel Quartet in F
"Irresistible" *The Times*. "Astonishing" *The Sunday Times*
Tickets £5 (£6 on the door). Concessions £2 off.

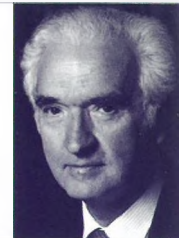
8 Tuesday 12.40pm

The Receiving End

STEWART HENDERSON talks to the Rt Hon the LORD MACKAY OF CLASHFERN

THE LORD CHANCELLOR

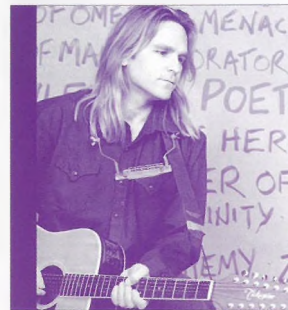
Tickets £2, concessions £1.



9 Wednesday 12.40pm

A Visible God 4

MARGARET HEBBLETHWAITE looks at Jesus through the eyes of his mother Mary. Tickets £1.50, concessions 50p.



10 Thursday 8.00pm

MIKE PETERS + THE POETS OF JUSTICE

The man who for 10 years fronted The Alarm road-tests some new songs with an excellent new band full of the same passion and fire.

PLUS SUPPORT

Tickets £5 (£6 on the door).

12 Saturday 8.00pm

Adzido 12 presents

BEHIND THE MASK

After their triumphant debut at The Nave last year, the master dancers and drummers of Europe's finest African dance company return with a spectacular new show.

"Exhilarating" *The Times*.
"Always enjoyable" *The Guardian*.
"Adzido receive ecstatic applause" *New Musical Express*.

Tickets £5.50 (£6.50 on the door).
Concessions £2 off.

Sponsored by
The Chef & Brewer Group Limited.



15 Tuesday 12.40pm

Your Health! 4

Dr PETER FISHER, of the Royal London Homeopathic Hospital, looks at some of the alternatives to conventional medicine. Tickets £2, concessions £1.



16 Wednesday 12.40pm

TRACES OF GOD : CHRISTINA ROSSETTI

Dr JAN MARSH talks to one of the greatest poets of the last century, whose inspiration was her faith. Christina Rossetti will be played by ANNE HARVEY. Tickets £1.50, concessions 50p.



17 Thursday 12.10pm – 1.50pm

Jazz Up The Nave

with ANDY SHEPPARD

"A supreme saxophonist ... probably the finest jazz master in Britain, and a worldwide phenomenon" *Q*.
With STEVE LODDER on keyboards.

Tickets £3, concessions £2.



22 Tuesday 12.40pm

PAUL GILLINGHAM talks to the knitwear designer

KAFFE FASSETT

Tickets £2, concessions £1. Sponsored by
Coca-Cola & Schweppes Beverages Limited.

