

Mon 13th - Fri 24th 10am-4pm. 10am-12pm Sat

The Nave of Arts

A working exhibition of designers who display and demonstrate some of the wealth of art found in the church. Artists include **Juliet Hemingray** who made the Archbishop of Canterbury's enthronement robes. Also on show are stained glass, stone carving, furniture, textiles, graphics and architecture. Admission FREE. See noticeboard for demonstration times.

Tues 28th 8pm

God As Artist

What makes art Christian? Is a G chord played on an organ more religious than one played on electric guitar? Musicologist **Cliff Bergdahl** conducts the intro. Admission FREE



Thurs 30th 8pm

Who Killed Tchaikovsky?

Level Five Theatre Company celebrate the Tchaikovsky Centenary with a dramatic new play which tries to unravel the mystery of his death. An accident, suicide or murder? Tickets £5.50, £6.50 on door (£3.50, £4.50)

Sun 3rd 8.30pm

The Harvest Rave at The Nave

Another chance to celebrate Christ in a style for the 90's. Be Brave; Hit the Rave at The Nave. Admission FREE



Mon 4th - Fri 22nd 10am-2pm, 10am-12pm Sat

Behind The Counter

At Boville Wrights' they do more than simply sell paint. See a stroke of High Street Art in this exhibition by staff past and present. Admission FREE

Wed 6th 12.40pm

Jesus of Aotearoa

Having worked with a Maori Mission for a number of years, **Barry Olsen** brings us some completely new perspectives on faith from the Land of the Long White Cloud. See also 21 Oct. Tickets £2 (£1)



Wed 13th 12.40pm

The Tight-Rope of Life

Being a fool for Christ is an old Christian image. **Roly the Clown** juggles with hoops and haloes, theology and a handful of other things, without losing faith. Tickets £2 (£1).



Thurs 14th 12.40pm

Local Showcase

Pupils from **Bishop Ramsey School** serenade the lunchtime audience on the flute, oboe, trumpet, bassoon and organ. A breath of fresh air. Tickets £2 (£1).



Thurs 14th 8pm

Laughing In My Sleep

Frank Topping returns with the hilarious show of his recent autobiography. *"Inventiveness and infectious good humour are Mr Topping's speciality."* The Daily Telegraph. *"...when it comes to laughter, there is no stopping Topping."* Brian Redhead. Tickets £4.50, £5 on door (£3, £3.50)



Wed 20th 12.40pm

Tears of Joy

Celebrating the 25th anniversary of TEAR Fund, Communications Director **Stephen Rand** explores the effect of charity fatigue in an ever needy world. A *One World Week* event. Tickets £2 (£1)

Thurs 21st 8pm

Te Ao Maori

The world of the Maori. An evening of dance, song and food with the London Maori Club and guests. A *One World Week* event. Tickets £5.50, £6.50 on door (£3.50, £4.50)



Fri 22nd 12.40pm

An Audience with Susie Sainsbury

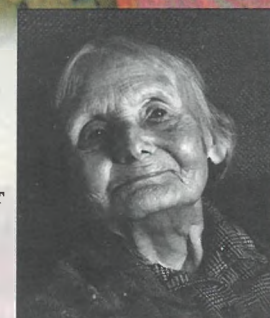
What do Jews and Christians have in common? Laurence Spicer interviews one of Britain's most energetic ladies and wife of Tim Sainsbury MP. Admission £2.50 (£1.50)



Mon 25th - Fri 5th 10am - 2pm
Sat 10am - 12pm

The Hillingdon Hundreds

An exhibition for the European Year of the Elderly, with photos by **Paul Windsor** and interviews by **Barbara Fisher** of 10 citizens living in the Borough who have celebrated 100 not out! Presented in association with Age Concern Hillingdon. Admission FREE.



Astrid Anderson by Paul Windsor

Tues 26th 8pm

Daniel Pailthorpe & Alison Martin

An elegant evening of classic style from the principal flautist and harpist of the ENO. Works by Tchaikovsky, Ravel and Mozart. Tickets £5.50, £6.50 on door (£3.50, £4.50).



Wed 27th 12.40pm

"Ghoulies and Ghosties"

Bobbing for apples, witches' broomsticks; harmless fun or darker forces? **David Porter** examines the background and current practice of Hallowe'en, shedding some light on All Hallows Eve. Tickets £2 (£1)



Thurs 28th 8pm

"...And That's Jazz!"

ROY CASTLE with **THE RADIO CITY JAZZ BAND** play us through a vivid and evocative history of Jazz. Live music at it's best! Tickets £5.50, £6.50 on door (£3.50, £4.50).



Thurs 4th 8pm

Breaking the Bank

Empty Space Theatre Company return with the story of the man who invented paper money, became the world's first millionaire and bankrupted an entire country. Eleanor Zeal's audacious new play is a high octane comedy. *"Empty Space simply create theatrical magic."* The Times. Tickets £5.50 £6.50 on door (£3.50, £4.50)



THE FESTIVAL AT A GLANCE

13 - 24 Sept The Nave of Arts - exhibition

Tue 28 Sept 8pm God as Artist - arts group

Thu 30 Sept 8pm Who Killed Tchaikovsky? - theatre

Sun 3 Oct 8:30pm Harvest Rave at The Nave - celebration

4 - 22 Oct Behind the Counter - exhibition

Wed 6 Oct 12.40pm Jesus of Aotearoa - Maori talk

Wed 13 Oct 12.40pm The Tight-Rope of Life - clown talk

Thu 14 Oct 12.40pm Local Showcase - concert

Thu 14 Oct 8pm Laughing in My Sleep - Frank Topping

Wed 20 Oct 12.40pm Tears of Joy - *One World Week* talk

Thu 21 Oct 8pm Te Ao Maori - One World Week event

Fri 22 Oct 12.40pm An Audience with Susie Sainsbury

25 Oct - 5 Nov The Hillingdon Hundreds - exhibition

Tue 26 Oct 8pm Daniel Pailthorpe & Alison Martin - concert

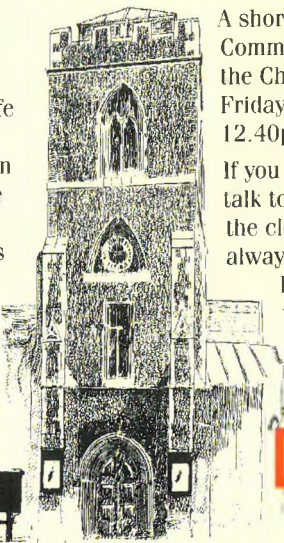
Wed 27 Oct 12.40pm Ghoulies & Ghosties - Hallowe'en talk

Thu 28 Oct 8pm "...And That's Jazz!" - concert

Thu 4 Nov 8pm Breaking the Bank - theatre

Evening events are shown in bold type.

The Nave is presented by St Margaret's as a contribution to the cultural and spiritual life of the community. St Margaret's is still an active church - a centre for public worship and private prayer, as it has been since the 13th century. For details of services, please see the church noticeboard or ring 0895 239055.



A short service of Holy Communion is held in the Chapel every Friday lunch at 12.40pm.

If you would like to talk to a member of the clergy, someone is always available on

Friday from 1.10 to 2pm.

THE NAVE

Tickets

Tickets are available from Maranatha and Barnard's Bookshops in Windsor Street, Monday - Saturday, 9am to 5:30 pm; or from The Nave, Monday - Friday, 10am - 2pm and from 7:30pm before evening performances. To reserve tickets for any event, call 0895 231333. Credit card bookings available through Maranatha on 0895 255748.

Concessions (prices in brackets) are available for children under 16, students, UB40s and senior citizens. Proof of status may be required.

Festival Special: 5 for 4!

Book any 5 events in advance and get 20% off the total price. Any mix of events. No concessions.

Discounts for parties of ten or more can be negotiated - ring 0895 812193. Tickets may not be exchanged nor money refunded, except in the case of the event being cancelled.

Directions

The Nave is a minute's walk from Uxbridge Tube (Piccadilly and Metropolitan) and Uxbridge Bus Station (U1, U2, U3, U4, U5, 207, 222, 223, 305, 348, and 458).

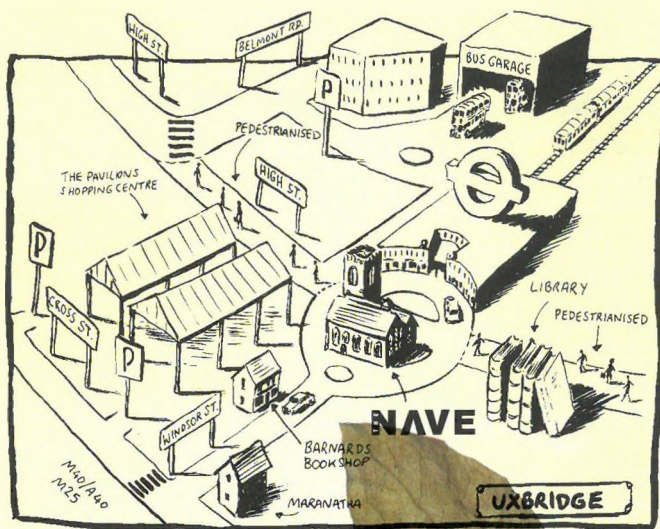
Ample 'Pay & Display' parking is available in the Cedars and Grainges car parks situated behind the Pavilions Shopping Centre, off Oxford Road. Limited parking is available in Windsor Street after 6:30pm.

Disabled People

The Nave offers easy access to wheelchairs, and has toilet facilities for disabled people - but please note that some events may take place upstairs. It would help if you could ring in advance with your particular needs.

Cover image: Liturgical vestment by Juliet Hemingray

The Nave at St Margaret's, Windsor Street, Uxbridge, Middx, UB8 1AB Phone: 0895 812193 Fax: 0895 812194



All programme details are accurate at the time of going to press. The management reserve the right to change the programme without notice.

THE NAVE

AUTUMN FESTIVAL 93

Designed by The Clearing House

SPONSORED IN PART BY

THE CHEF & BREWER GROUP
LIMITED