

## NOVEMBER



### Tues 2nd 8pm God as Artist

The meeting for Christian artists of every description. Fine artists are invited to bring and discuss their work. Admission Free



### Wed 3rd 12.40pm Publish and be damned!

**Tony Collins** of Monarch Publications discusses the editor's power, the importance of the written word, and the impact of the Christian press on today's mega-driven society. Tickets £2 (Concessions £1)

### Thurs 4th 8pm Breaking the Bank

Economics made easy - print your own money! In 1719 John Law introduced paper currency, became the world's first millionaire, then broke the Bank of France. **Empty Space Theatre Co** return with this lively musical comedy with exquisite paper costumes. "Pure pantomime...with deftly interwoven four-part harmony" *The Independent*.

Tickets £5.50, £6.50 on the door (Concs £3.50, £4.50)



### Sat 6th 10am-4pm Leading small groups



Organised and run by the training unit of Scripture Union this course is for anyone working with adult groups, covering leadership skills and group dynamics. Please book in advance on 081 861 3257. £10 (£8)

### Wed 10th 12.40pm Neighbours

The daily 'soap' isn't as funny as Hilary Cook's faith-filled balancing act between being a wife & mum, lollipop lady & dentist, broadcaster and author - introducing her to a constant stream of entertaining neighbours. Tickets £2 (£1)



### Mon 15th Nov-Wed 15th Dec Cards for Good Causes



Christmas Cards on sale in aid of a wide variety of charities. Mon-Fri 10am-2pm, Sat 10-12pm

### Wed 17th 12.40pm MISSION QUITE POSSIBLE

The Bishop of Willesden, **Graham Dow** on his first visit to The Nave talks to Alastair Cutting on subjects ranging from the occult to healing, poverty and family breakdown. Tickets £2 (£1)



### Thurs 18th 12.10-1.30pm Flamenco Infusion

Internationally renowned spanish guitarist Jason Carter plays a dazzling jazz-influenced lunchtime set. Tickets £3 (£2)



### Wed 24th 12.40pm Revelations from the Rectory

What's going on behind the parsonage curtains? Delightful humorist **Jane Grayshon** explores the fun, and sometimes the pain, of a clergy household. Victoria Wood meets Adrian Plass at the vicarage! Tickets £2 (£1)

### Tue 30th 12.40pm Local Call

New Leader of Hillingdon Borough Council **Steve Panayi** talks about issues of local interest with Paul Johnson. Questions in writing to The Nave before 12 noon on the day. Tickets £2 (£1)



## DECEMBER



### Wed 1st 12.40pm Traces of God: Nicholas Ferrar

In reviving community life at Little Gidding in the 1990s, **Robert Van de Weyer** echoes the original community which Ferrar founded there in the 1600's. Tickets £2 (£1)

### Sat 4th 8pm Rob & Gilly in concert

Four graceful, captivating albums of finely arranged Christian music on classical guitar to their credit, this is a rare chance to hear **Rob and Gilly** live. Tickets £4, £5 on the door (£3, £3.50)



### Tues 7th 11am and 2pm Fishing for Pigs

With a rich mixture of actors, puppets, live music and crazy comedy, the **Oily Cart Theatre Company** launch themselves at The Nave with two shows for 5-9 yr olds. Covers some Technology issues from the National Curriculum. Tickets Children £1.50 Adults £2.50

### Wed 8th 12.40pm Faith in Sport

The bible talks of Christians 'running the race, winning the prize'. Working with many professional sports people, **Andrew Wingfield Digby** sets the pace. Alastair Cutting tries to keep up. Tickets £2 (£1)



### Thurs 9th 12.40pm Sweet 'Cello

**Nicky Baxter** takes time off from the Royal Academy of Music to play Bach's 5th 'Cello Suite. Tickets £3 (£2)

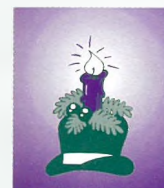


### Sun 12th 8.30pm The Christmas Rave in The Nave

Quiet as a snowflake; loud as the heavenly host. Admission Free, donations welcome.

### Wed 15th 12.40pm Christmas is coming...

...Who's getting fat? Jo Ind helps us prepare for the great feast by thinking about food as a luxury, and of eating as a disorder. Tickets £2 (£1)



### Wed 15th 6pm O little town of businessmen

A short service of lessons and carols, in association with the Rotary Club of Uxbridge. All Welcome. There will be a collection in aid of this years Rotary charity. Admission Free.

### Thurs 16th 12.10-1.50pm Jazz up The Nave

With the **Simon Gilby Quartet** Sultry saxophone from Simon, with Tim Richards on piano, Julie Walkington on Acoustic Bass, and Andrew Huggett on drums. Familiar standards weaving harmoniously with the freshest contemporary jazz. "...an accomplished saxophonist...reflecting the qualities of the most professional performers." *Prof. Jim Odgren, Berklee College of Music U.S.A.* Tickets £3 (£2)



### Wed 22nd 12.40pm Art to Heart

Involved for many years with the Arts Centre Group, and then Genesis Arts, **Nigel Goodwin** brings a wealth of talent and experience to his work of integrating the churches and the arts, and supporting professional artists in their jobs. Tickets £2 (£1)

### Wed 22nd 8pm God as Artist

The meeting for Christian artists of every description.

You can reserve tickets for any event on 0895 231333. Tickets will be held at The Nave for three working days, pending receipt of payment by post or in person. (Cheques to be made payable to 'The Nave at St Margaret's') See overleaf for further booking details, map and directions.



# AT A GLANCE

## NOVEMBER 1993

<b>Wed 3</b>	PUBLISH AND BE DAMNED!: Tony Collins. 12.40pm
<b>Thu 4</b>	BREAKING THE BANK: A Musical Comedy. 12.40pm.
<b>Sat 6</b>	LEADING SMALL GROUPS: 10am-4pm.
<b>Wed 10</b>	NEIGHBOURS: Hilary Cook. 12.40pm.
<b>15-15 Dec</b>	CARDS FOR GOOD CAUSES.
<b>Wed 17</b>	MISSION QUITE POSSIBLE: Graham Dow. 12.40pm.
<b>Thu 18</b>	FLAMENCO INFUSION: Jason Carter 12.10-1.30pm.
<b>Wed 24</b>	REVELATIONS FROM THE RECTORY: 12.40pm.
<b>Tue 30</b>	LOCAL CALL: Steve Panayi, Council Leader, 12.40pm.

## DECEMBER 1993

<b>Wed 1</b>	TRACES OF GOD: Nicholas Ferrar, 12.40pm.
<b>Sat 4</b>	ROB & GILLY IN CONCERT: 8pm.
<b>Tue 7</b>	FISHING FOR PIGS: Oily Cart Theatre Co. 11am, 2pm.
<b>Wed 8</b>	FAITH IN SPORT: Andrew Wingfield Digby. 12.40pm.
<b>Thu 9</b>	SWEET 'CELLO: Nicky Baxter. 12.40pm.
<b>Sun 12</b>	CHRISTMAS RAVE AT THE NAVE, 8.30pm.
<b>Wed 15</b>	CHRISTMAS IS COMING: Jo Ind, 12.40pm.
<b>Wed 15</b>	O LITTLE TOWN OF BUSINESSMEN: 6pm.
<b>Thu 16</b>	JAZZ UP THE NAVE: Simon Gilby Quartet, 12.10-1.50pm.
<b>Wed 22</b>	ART TO HEART: Nigel Goodwin. 12.40pm.

Evening events are highlighted in green.

The Nave is presented by St Margaret's as a contribution to the cultural and spiritual life of the community. St Margaret's is still a church – a centre for public worship and private prayer, as it has been since the 13th century. For details of services, please see the church noticeboard or ring 0895 239055.



A short service of Holy Communion is held in the Day Chapel every Friday lunch at 12.40pm.

If you would like to talk to a member of the clergy, someone is always available on Friday, 1.10 - 2pm.

# THE NAVE INFO

## Tickets

Tickets are available from Barnards Bookshop and Maranatha in Windsor Street, Monday-Saturday, 9am - 5.30pm; or from The Nave, Monday-Friday, 10am - 2pm and from 7.30pm before evening performances. To reserve tickets for any event, call 0895 231333. Credit Card Bookings available through Maranatha on 0895 255748

Concessions (prices in brackets) are available for children under 16, students, UB40s and senior citizens. Proof of status may be required.

Discounts for parties of ten or more can be negotiated – ring 0895 812193. Tickets may not be exchanged nor money refunded, except in the case of the event being cancelled.

## Directions

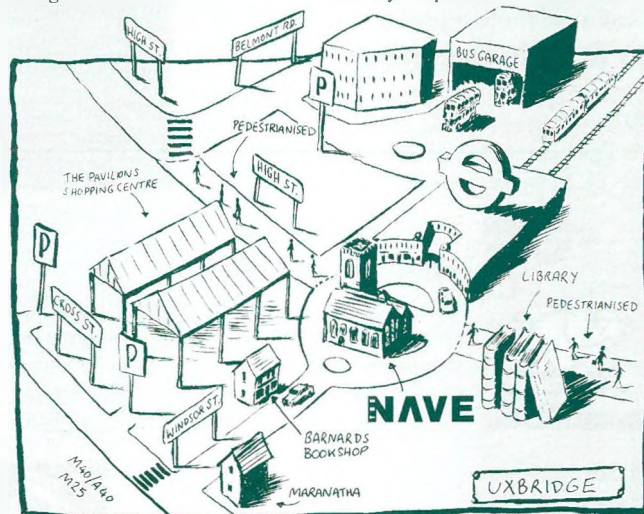
The Nave is a minute's walk from Uxbridge Tube (Piccadilly & Metropolitan) and Uxbridge Bus Station (U1, U2, U3, U4, U5, 207, 222, 223 305, 348 and 458).

Ample 'Pay & Display' parking is available in the Cedars and Grainges car parks situated behind the Pavilions Shopping Centre, off Oxford Road.

Limited free parking is available in Windsor Street after 6.30pm.

## Disabled People

The Nave offers easy wheelchair access, a toilet for disabled people and an induction loop – but please note that some events may take place upstairs without these facilities. Please ring in advance with your particular needs.



The Nave at St Margaret's, Windsor Street, Uxbridge, Middlesex UB8 1AB  
Tel: 0895 812193 Fax: 812194

All programme details are accurate at time of going to press.  
The management reserve the right to change the programme without notice.

# THE NAVE

November & December 1993



**Nicky Baxter**  
*Thursday December 9th, 12.40pm*