

OCTOBER

3-20 Oct Open daily

Pastel 'n' Palette

The Autumn exhibition from the Hillingdon Art Society. Admission Free

Wed 4 Oct 12.40pm

Desert walk

On the Jewish festival of Yom Kippur DAVID PRAILL retraces the 40 day walk and camel ride he made for charity, from Mt Hermon through the deserts to Mt Sinai, illustrating beauty and peace in a war torn land.

Tickets £2 (concessions £1)

Tues 10 Oct 12.40pm

Local Call

Hillingdon Health Agency IAN HAMMOND, Director of Acute Commissioning, with a medical colleague, are open to written questions from the public, chaired by Paul Johnson. Questions to The Nave by 12 noon please. Tickets £2 (£1)

Thurs 12 Oct 8pm

Jazz Up The Nave

LE SEP TÊTE present *From Bossa to Broadway*, featuring exciting and original West Coast Jazz arrangements of standards from 1930's Broadway to 1960's Brazil.

Tickets £5, £6 on door (£4, £5 on door)

Sat 14 Oct 8pm

Saturday Cabaret

Featuring the arresting *a cappella* gospel vocals of AZDAK'S GARDEN, the sultry music of singer songwriter DAWN COZMA, lightly stirred with the incisive poetry of GRAHAM LANGLEY.

Tickets £4, £5 on door (£3, £4 on the door)

Wed 18 Oct 12.40pm

Luke the Physician

An exploration of the writer of the third gospel for this St Luke's Day with RICHARD CHRISTIAN. Tickets £2 (£1)

Thurs 19 Oct 8pm

The Boccherini String Trio

David Nunez violin, Jeremy Perkins viola, and Nicky Baxter cello playing Brahms, Beethoven, Handel arr. Halverson. "...a performance presented with great panache and sensitivity..." Tickets £5, £6 on door (£4, £5 on door)



23 Oct - 10 Nov Open daily

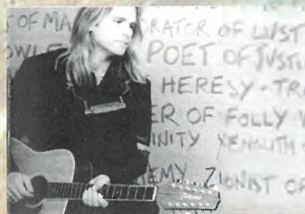
United Children, United Nations

An exhibition for One World Week celebrating the 50th anniversary of the United Nations, with material from UNICEF, the United Nations Children's Fund, whose own anniversary is next year.

Wed 25 Oct 12.40pm

World Aid

One time Ugandan Ambassador to China, and now working with Christian Aid on their 50th birthday, JAMES OPORTIA-EKWARO brings a world-wide understanding of the work, and the continued need for, the aid agencies. Tickets £2 (£1)



Sat 28 Oct 8pm

Mike Peters: Un-plugged & Un-Alarm-ed

For ten years front-man of the Alarm, and an outstanding performer, The Nave welcomes Mike back for a storming solo performance. Tickets £5.50, £6.50 on door (£4, £5 on door)

Wed 1 Nov 12.40pm

Paperback Jubilee

In the 25th year of Hodder Christian Paperbacks, editor JAMES CATFORD talks with John Witcombe about trends in the publishing world. Tickets £2 (£1)

Thurs 9 Nov 12.10-1.50pm

Jazz Up The Nave

STONEMOOSE, formed by composer Paul Westwood (bass guitar), with John Trotter (drums) and Eran Kendler (guitar); have an enviable list of playing credits as session players (Elton John, Al Jarreau, George Benson, Nigel Kennedy, Barbara Thompson, George Martin, Andy Fairweather et al) and, as Stonemoose, present a unique style of musical excellence. Tickets £3.50, (£2.50)



Thurs 9 Nov 8pm

Martyn Joseph

"A burnished voice, intimate manner and unhurried guitar style" Guardian, returns to The Nave after a major tour with Mike and the Mechanics and a new solo album release. "There is a depth, resonance and emotional punch to this album which belies comparison." Q Magazine Tickets £5.50, £6.50 on door (£4, £5 on door)



14 Nov-16 Dec Open daily

Cards for Good Causes Ltd

Christmas Cards on sale once again from a wide range of charities.



Wed 15 Nov 12.40pm

The Height of Fashion

Author, broadcaster, fashion guru - and vicar?! MIKE STARKEY breaks the mould in his studied critique and responsible approach to the world of *haute couture*. Tickets £2 (£1) (see also 6 December)



19-26 Nov Open daily

Mission in Action Exhibition

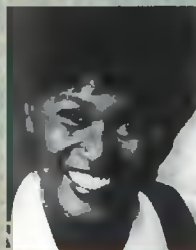
Mission agencies have come a long way since the Victorian missionaries. Far from destroying resident cultures, many agencies now actively support the empowerment of the weak, and voicing the voiceless. See through the work of six agencies how things have changed. Admission Free



Tues 21 Nov 12.40pm

An Audience with... Jumoke Fashola

The bubbly Nigerian actress and presenter of *Holidays Out*, *Summer Holiday*, *Summer Sunday* and the *GLR Gospel Show*, in conversation with Lawrence Spicer. Tickets £3 (£2) Supported by Lincoln National.



Tues 21 Nov 8pm

ONDINE ENSEMBLE La Belle Epoque

The ONDINE ENSEMBLE has a residency at the Nave for a concert series of the best Fin de Cècle French music and contemporary material. Their large chamber ensemble will play music by Debussy and Ravel, et al. Tickets £5.50, £6.50 on door (£4, £5 on door) Supported by London Arts Board and the London Boroughs Grants Committee.



Wed 22 Nov 12.40pm

A Rocha

PETER HARRIS of this Portugal based conservation project, asks us to look at the biblical command to tend the earth responsibly. Tickets £2 (£1)



Thurs 23 Nov 8pm

Local Showcase

Terry Drummond's LA EXPRESSION brings us a zinging evening of jazz from one of the areas most talked about bands. Tickets £4, £5 on door, (£3, £4 on door)



Wed 29 Nov 12.40pm

Hymns, Psalms & Spiritual Songs (I)

As part of a major new series about church music MICHAEL SAWARD, canon at St Paul's Cathedral and prolific hymn writer (*Christ triumphant, These are the facts*) looks at the structure and style of traditional hymns, and asks whether they have had their day. Tickets £2 (£1)

DECEMBER

Fri 1 Dec 11am, 2pm

A Christmas Carol



The Nave's theatre for children features the BOOSTER CUSHION THEATRE CO in Dickens' classic for 5's and over. Book early! Tickets: children £1.50, adults £2.50

Wed 6 Dec 12.40pm

The Heist of Fashion

In a second look at fashion, 'punk priest' BRIAN RALPH takes a radical look at the lure of contemporary fashion culture, giving us the perspective of the alternative conservation-conscious life-style of the Traveller. Tickets £2 (£1) (see also 15 November)



Wed 6 Dec 6pm

St Margaret's 750th Anniversary Civic Service

In one of the final anniversary events of The Nave's host church, we welcome the Mayor of Hillingdon and other prominent members of Uxbridge. The service is open to all.



Thurs 7 Dec 12.40pm

Hymns, Psalms & Spiritual Songs (II)

In the second of the church music series, IAN WHITE looks at the ancient hymn book of the Jewish and Christian faiths, the book of Psalms, and brings his expert knowledge and musicianship in bringing them to life. Tickets £2 (£1)



Thurs 7 Dec 8pm

Ian White In Concert

In a rare south-of-the-border concert, Scottish psalmist IAN WHITE brings his inspiring participative music to The Nave. Tickets £4, £5 on door (£3, £4 on door). Presented in association with Maranatha.

Sat 9 Dec 7.30pm

Uxbridge Choral Society

The Virtuosi of London present a large scale production of Handel's Messiah Pt1, including Hallelujah & Amen Chorus, and the JS Bach Magnificat. Tickets £6 (£4)



Tues 12 Dec 12.40pm

An Audience with... Derek Cooper

The voice of Radio 4's Food Programme and acknowledged authority in the catering industry; the thinking person's gourmet in conversation with Lawrence Spicer. Tickets £3 (£2) Supported by Lincoln National.

Wed 13 Dec 12.40pm

Hymns, Psalms & Spiritual Songs (III)

In the third of our series on music in the church NOEL RICHARDS (*All heaven declares, You laid aside your majesty*) looks at the current proliferation of new church music, asking what percentage will pass the test of time, and by what criteria it should be judged. Tickets £2 (£1)



Thurs 14 Dec 12.10-1.50pm

Jazz Up The Nave

JEEPERS CREEPERS return for lunch-time jazz-jump gig, featuring 40's & 50's small band jazz in the style of Louis Jordan et al. Tickets £2 (£1)



Thurs 14 Dec 8pm

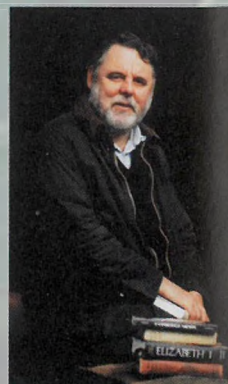
The Visitation

Mary the mother of God; and God the mother of Mary. ELLE M Theatre Company return in a reverent yet radical exploration of God bearing and child bearing, with images as diverse as classic art, and Sindy dolls. Tickets £5.50, £6.50 on door (£4, £5 on door)

Tues 19 Dec 12.40pm

The Receiving End: Terry Waite

talks with Stewart Henderson. Tickets £3 (£2)



Wed 20 Dec 12.40pm

Gifts and Gift-bringers

MAURICE LYNCH explores a Christmas theme through story, poem and picture. Tickets £2 (£1)

Wed 20 Dec 6pm

God Rest You, Merry Businessmen

A traditional carol service presented in association with the Rotary Club of Uxbridge.



LONDON ARTS BOARD

LINCOLN NATIONAL

Lincoln National (UK) PLC is one of the UK's fastest-growing financial services companies, providing life insurance, pensions and unit trusts. At the forefront of the unit-linked life industry for 30 years, it now has over 760,000 clients and funds under management in excess of £3.1 billion.

With nearly 600 Head Office employees based at The Quays in Uxbridge, the Company is committed to a long-term future as one of the town's largest employers. Lincoln National's aim is to build a company of the highest standing in the financial community with a reputation for unparalleled customer service and satisfaction.

THE NAVE

The Nave is presented by St Margaret's as a contribution to the cultural and spiritual life of the community. St Margaret's is still a church - a centre for public worship and private prayer. For details of services, please see the church noticeboard or ring 01895 258 766. A short service of Holy Communion is held in the Chapel every Friday lunch-time at 12.40pm. If you would like to talk to a member of the clergy, someone is always available on Friday from 1.10 to 2pm.

The Nave at St Margaret's, Windsor Street, Uxbridge, Middx., UB8 1AB

Phone: 01895 812 193 Fax: 01895 812 194

Tickets

You can reserve tickets for any event on **01895-812 193**. Tickets will be held at The Nave for three working days, pending receipt of payment in post or in person. (Cheques to be made payable to 'The Nave at St Margaret's'. Tickets are available from Barnard's and Maranatha book shops in Windsor Street, Monday-Saturday, 9am-5.30pm; or from The Nave, Monday-Friday, 10am-2pm, and from 7.30pm before evening performances. Credit Card bookings are available through Maranatha on 01895-255 748. Concessions (prices in brackets) are available for children aged under 16, students, UB40s and senior citizens. Proof of status may be required. Discounts for parties of 10 or more can be negotiated - ring 01895- 812 193. Tickets may not be exchanged, nor money refunded, except in the case of the event being cancelled.

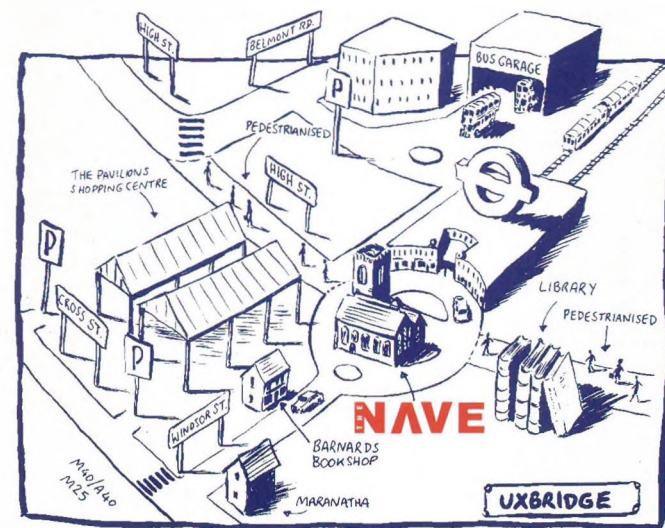
Directions

The Nave is quickly and easily accessible from central London. It is a minute's walk from Uxbridge Tube (Metropolitan and in peak time Piccadilly Lines) and Uxbridge Bus Station (R1, U1, U2, U3, U4, U5, U9, U10, 58, 98, 207, 222, 305, 331, 458, 558 and 705). Ample 'Pay and Display' parking is available in the Cedars and Grainges car parks situated behind The Pavilions Shopping Centre, off Oxford Road. Limited free parking is available in Windsor Street after 6.30pm.

Disabled people

The Nave offers easy wheelchair access, a toilet for disabled people and an induction loop - but please note that some events may take place upstairs without these facilities. Please ring in advance with your particular needs.

All programme details are accurate at the time of going to press. The management reserve the right to change the programme without notice.



Designed by The Clearing House, London W13 0181 991 0029

THE NAVE

October, November and December 1995



ONE WORLD WEEK 23 - 27 OCTOBER

This leaflet sponsored by

LINCOLN NATIONAL